

Vibration isolators



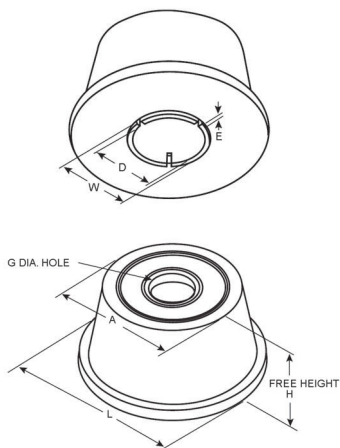
RHE Rubber Isolation Hanger Element

A low cost, low deflection hanger element for effective isolation of noise and vibration from mechanical equipment. Typically used for trapeze supported piping, packaged air conditioners, fan coil units and fans. Particularly useful where space is limited.

Features

Colour coded for easy identification

Corrosion proof - all metal elements embedded in the elastomer



| Type | Colour Code | Max Load Kg | Static Defl. MM | H | L | W | D | A | G | E |
|------|-------------|-------------|-----------------|----|----|----|----|----|----|---|
| RHE1 | Blue | 17 | 5 | 27 | 45 | 25 | 22 | 36 | 10 | 2 |
| | White | 25 | | | | | | | | |
| | Red | 40 | | | | | | | | |
| | Green | 55 | | | | | | | | |
| RHE2 | White | 70 | 6 | 32 | 60 | 30 | 25 | 45 | 16 | 3 |
| | Red | 100 | | | | | | | | |
| | Green | 160 | | | | | | | | |
| | Grey | 250 | | | | | | | | |



RH Rubber Isolation Hanger

A low cost, low deflection hanger for effective isolation of noise and vibration from mechanical equipment. Typically used for piping, packaged air conditioners, fan coil units and fans.

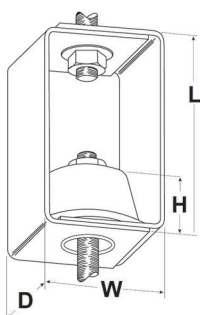
Features

The active element is colour coded for easy identification

Heavy duty steel cage

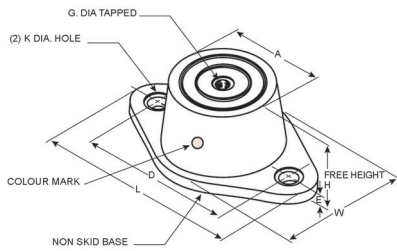
Fully weather proof

Resistant to failure caused by fire or mechanical damage



| Type | Colour Code | Max Load Kg | Static Defl. MM | H | L | W | D | G |
|------|-------------|-------------|-----------------|----|-----|----|----|----|
| RH1 | Blue | 17 | 5 | 31 | 75 | 60 | 50 | 10 |
| | White | 25 | | | | | | |
| | Red | 40 | | | | | | |
| | Green | 55 | | | | | | |
| RH2 | White | 70 | 6 | 41 | 130 | 75 | 65 | 16 |
| | Red | 100 | | | | | | |
| | Green | 160 | | | | | | |
| | Grey | 250 | | | | | | |

Vibration isolators



NR Rubber Mounting

A low cost rubber/steel mounting for effective isolation of noise and vibration from mechanical equipment with speeds of 1,000 rpm and higher.

Features

Colour coded for easy identification

Corrosion proof - metal all elements embedded in the elastomer

Non-skid ribbed base

| Type | Colour Code | Max Load Kg | Static Defl. MM | H | L | W | D | A | G | K | E |
|------|-------------|-------------|-----------------|----|-----|-----|-----|-----|-----|-----|---|
| NR1 | Blue | 17 | | | | | | | | | |
| | White | 25 | | | | | | | | | |
| | Red | 40 | 5 | 28 | 80 | 45 | 60 | 36 | M10 | 8.5 | 5 |
| | Green | 55 | | | | | | | | | |
| | Grey | 80 | | | | | | | | | |
| NR2 | White | 70 | | | | | | | | | |
| | Red | 100 | 6 | 32 | 98 | 60 | 76 | 45 | M10 | 8.5 | 6 |
| | Green | 160 | | | | | | | | | |
| | Grey | 250 | | | | | | | | | |
| NR3 | White | 145 | | | | | | | | | |
| | Red | 200 | 6 | 44 | 140 | 85 | 104 | 68 | M12 | 14 | 7 |
| | Green | 300 | | | | | | | | | |
| | Grey | 500 | | | | | | | | | |
| NR4 | Blue | 380 | | | | | | | | | |
| | White | 580 | 6 | 46 | 166 | 110 | 128 | 100 | M16 | 14 | 9 |
| | Red | 850 | | | | | | | | | |
| | Green | 1300 | | | | | | | | | |

SHS Isolation Hanger

A steel spring hanging mount for effective isolation of noise and vibration from mechanical equipment.

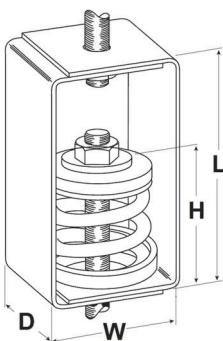
Features

Colour coded for easy identification

Fully weather proofed

Rugged, heavy gauge steel cage

Non-skid ribbed base



| Type | Max Load Kg | Static Defl. MM | Spring Colours | H | L | W | D | G |
|--------|-------------|-----------------|----------------|----|-----|----|----|----|
| SHS-9 | 10 | 33 | Yellow | | | | | |
| SHS-10 | 15 | 33 | Brown | | | | | |
| SHS-11 | 30 | 33 | Blue | | | | | |
| SHS-12 | 50 | 28 | Black | 86 | 130 | 75 | 65 | 12 |
| SHS-13 | 75 | 25 | Red | | | | | |
| SHS-14 | 125 | 25 | Green | | | | | |
| SHS-16 | 175 | 20 | Grey | | | | | |
| SHS-17 | 200 | 15 | Orange | | | | | |

Vibration isolators

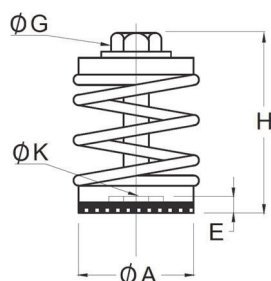


XS-XL Open Spring Mount

Steel spring mount for effective isolation of noise and vibration from mechanical equipment. Easily installed and the spring can be easily interchanged to give a wide range of load/deflection characteristics.

Features

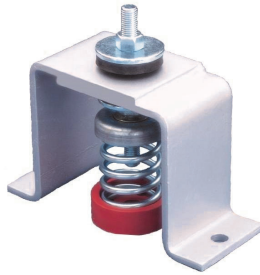
- Colour coded for easy identification
- Fully weather proofed
- Rubber isolated bolt hole in base
- Built in levelling bolt with locking cap screw (XL only)
- Separate top and bottom locating cups
- Heavy duty stable steel spring



| Type | Max Load Kg | Static Defl. MM | Spring Colours | H | A | G | J | K | E |
|-------|-------------|-----------------|----------------|----|----|----|---|----|----|
| XS-9 | 10 | 33 | Yellow | 84 | 60 | 12 | - | 16 | 12 |
| XS-10 | 15 | 33 | Brown | | | | | | |
| XS-11 | 30 | 33 | Blue | | | | | | |
| XS-12 | 50 | 28 | Black | | | | | | |
| XS-13 | 75 | 25 | Red | | | | | | |
| XS-14 | 125 | 25 | Green | | | | | | |
| XS-16 | 175 | 20 | Grey | | | | | | |
| XS-17 | 200 | 15 | Orange | | | | | | |

| Type | Max Load Kg | Static Defl. MM | Spring Colours | H | A | G | J | K | E |
|-------|-------------|-----------------|----------------|-----|----|-----|-----|----|----|
| XL-89 | 10 | 40 | White | 127 | 80 | M16 | M10 | 20 | 13 |
| XL-90 | 20 | 38 | Violet | | | | | | |
| XL-91 | 35 | 35 | Violet/Black | | | | | | |
| XL-92 | 50 | 33 | Yellow | | | | | | |
| XL-93 | 100 | 33 | Brown | | | | | | |
| XL-94 | 150 | 30 | Blue | | | | | | |
| XL-95 | 200 | 30 | Black | | | | | | |
| XL-96 | 250 | 28 | Red | | | | | | |

Vibration isolators



CLM Seismic Mounting

An integrated, stand alone six direction restrained spring mounting with cup located springs and internal level adjustment. CLM Mounts are rated to the static force restraint requirements of:

AS1170.4 for application up to maximum equipment loads in all Australian seismic zones.

NZS4219 for application with reduced equipment load range in New Zealand.

Application

Where equipment requires the use of a spring type mounting for high degree isolation under normal operating conditions but with the facility to restrain equipment from excessive motion in any direction due to displacement inputs imparted by the foundation through earthquake activity.

Features

- Heavy duty stable steel spring
- Acoustically isolating location cup
- Single adjustable central vertical restraint and levelling bolt
- Fully weather proofed

Construction

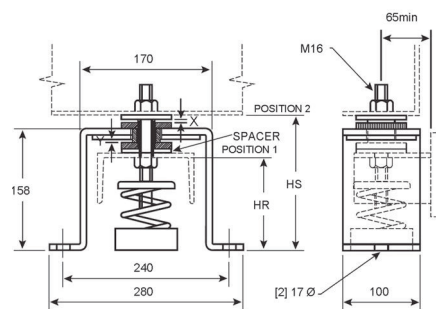
Hot dipped galvanised steel housing, oil resistant high frequency spring base location cup. All other components including spring are zinc plated.

Mounting Selection

When selecting mountings for seismic applications, it is recommended that the calculated mass of the equipment be increased by 20% to ensure static deflections are conservative. For equipment using more than four mounting points, distribution of the mounting should be such that each has equal loading. If this cannot be done, mounting selections must be made on the basis of matching static deflections as closely as possible.

Further Technical Information

This overview provides minimum detail and should not be used for final design purposes. Reference should be made to the relevant earthquake standards for the country concerned.



| Type | Max Load Kg | Static Defl. MM | Spring Colours | Horiz. Restraint Capacity | Vert. Restraint Capacity |
|--------|-------------|-----------------|----------------|---------------------------|--------------------------|
| CLM-89 | 10 | 40 | White | 3.5kN | 7kN |
| CLM-90 | 20 | 38 | Violet | | |
| CLM-91 | 35 | 35 | Violet/Black | | |
| CLM-92 | 50 | 33 | Yellow | | |
| CLM-93 | 100 | 33 | Brown | | |
| CLM-94 | 150 | 30 | Blue | | |
| CLM-95 | 200 | 30 | Black | | |
| CLM-96 | 250 | 28 | Red | | |
| CLM-97 | 300 | 28 | Green | | |
| CLM-98 | 400 | 25 | Grey | | |